

COMMUNITY SURVEY MEMORANDUM



DOWNTOWN DELAWARE ACTION PLAN

1,182 SURVEY RESPONSES as of 4/14/21

MAJOR THEMES

- Things are improving in Downtown Delaware. The main disagreement is between new “upscale” development and historic preservation.
- The focus is too centered around drinking and bars, clearly evident from how most visitors spend \$20 to \$50 when they visit downtown. The area should be more family-oriented.
- There should be more parking downtown, such as a new parking garage, and it should be affordable.
- There is a lack of green space and the parks that do exist are not viewed as very safe. Some residents also view green space as a solution to flooding.
- The downtown area is too noisy and crowded, particularly with big trucks that use the route as a cut-through.
- Downtown Delaware needs more retail stores, grocery stores, and shopping.
- There should be more entertainment and events to attract people to downtown.
- General improvements to the roads and sidewalks are very important. The streetscape could be more activated with planters, trees, and bike racks.
- Expanding housing options is not a focus. Most claimed that living within walking distance of downtown is not important.
- Split between maintaining and improving the current character.

TOP RESPONSES

- Delaware should attract: families with children and young professionals as visitors, young professionals as residents
- Most demanded housing: single family homes
- Most demanded green space: passive space (courtyards, pocket parks, etc.)
- Most demanded improvement after parking: additional public/green space
- Street that needs to be addressed: Sandusky St.
- Identity: traditional small-town Americana

PRIORITY PROJECTS

Most people agree with the list of priority projects. Excluding the project for public art, all the ‘agrees’ were over 70%.

Top project: Riverfront District

Main complaints being:

- Some are already being completed
- The City should focus most on improving its infrastructure
- Public art is not a main concern
- Confusion over “Winter Street District”
- Poor experience with previous improvement projects

Other projects to consider:

- More bike paths and increased connectivity
- More grocery stores
- Better city branding
- Stricter property maintenance
- Projects that encourage diversity
- Increased accessibility (parking)

1. Riverfront District
2. South Block Development
3. Sandusky & Winter Street Streetscape
4. Public Green / Open Space
5. Winter Street District
6. Opportunities for Public Art

COMMUNITY SURVEY MEMORANDUM



DOWNTOWN DELAWARE ACTION PLAN

MAJOR THEMES

- Things are improving in Downtown Delaware. The main disagreement is between new “upscale” development and historic preservation.
- The focus is too centered around drinking and bars, clearly evident from how most visitors spend \$20 to \$50 when they visit downtown. The area should be more family-oriented.
- There should be more parking downtown, such as a new parking garage, and it should be affordable.
- There is a lack of green space and the parks that do exist are not viewed as very safe. Some residents also view green space as a solution to flooding.
- The downtown area is too noisy and crowded, particularly with big trucks that use the route as a cut-through.
- Downtown Delaware needs more retail stores, grocery stores, and shopping.
- There should be more entertainment and events to attract people to downtown.
- General improvements to the roads and sidewalks is very important. The streetscape could be more activated with planters, trees, and bike racks.
- Expanding housing options is not a focus. Most claimed that living within walking distance of downtown is not important.
- Split between maintaining and improving the current character.



80% leave
Downtown Delaware
to go to retail stores



would like to see
a more activated
streetscape



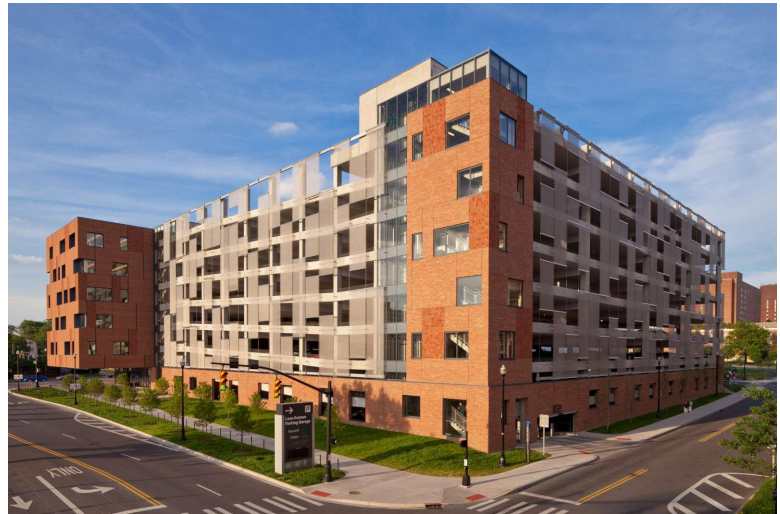
Westerville, Ohio is an example of a traditional “small town”, filled with an equal mix of retail stores and restaurants.

COMMUNITY SURVEY MEMORANDUM

DOWNTOWN DELAWARE ACTION PLAN



63% claim
parking is not easy to
find or accessible
downtown



Lane Avenue Parking Garage on Ohio State University's campus offers a variety of uses due to the academic centers attached to it. It also disguises its use as a parking garage by blending in with the brick of nearby buildings and using shading screens.



74% think entertainment
and events are 'pretty' or 'very'
important for them to visit
downtown more often



Columbus Commons in downtown Columbus comes alive during the summer with many different concerts and other forms of entertainment.

COMMUNITY SURVEY MEMORANDUM

DOWNTOWN DELAWARE ACTION PLAN

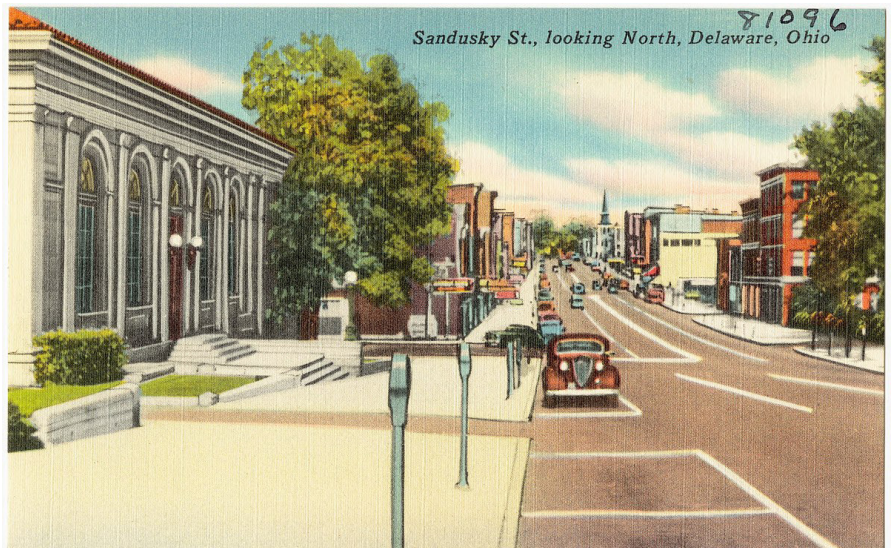


TOP RESPONSES

- Delaware should attract: families with children and young professionals as visitors, young professionals as residents
- Most demanded housing: single family homes
- Most demanded green space: passive space (courtyards, pocket parks, etc.)
- Most demanded improvement after parking: additional public/green space
- Street that needs to be addressed: Sandusky St.
- Identity: traditional small-town Americana



want Delaware to attract
young professionals



Sandusky Street as it was in the 1930s and 40s. The road and sidewalks are all clean, but notice how no one is using them.

COMMUNITY SURVEY MEMORANDUM

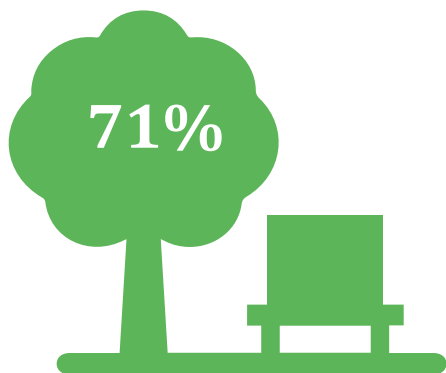
DOWNTOWN DELAWARE ACTION PLAN



44% rank passive
green space as the #1
type of green space



Gay Street in Columbus, Ohio offers small opportunities for green space that people can enjoy, with trees lining the street and potted plants near entrances.



71%
feel that there is not
adequate public/green
space downtown



Topiary Park in Columbus is an example of a pocket park, which can provide both green space and a creative form of art to the city.

COMMUNITY SURVEY MEMORANDUM

DOWNTOWN DELAWARE ACTION PLAN



PRIORITY PROJECTS

Most people agree with the list of priority projects. Excluding the project for public art, all the 'agrees' were over 70%.

Top project: Riverfront District

Main complaints being:

- Some are already being completed
- The City should focus most on improving its infrastructure
- Public art is not a main concern
- Confusion over "Winter Street District"
- Poor experience with previous improvement projects

Other projects to consider:

- More bike paths and increased connectivity
- More grocery stores
- Better city branding
- Stricter property maintenance
- Projects that encourage diversity
- Increased accessibility (parking)

1. Riverfront District
2. South Block Development
3. Sandusky & Winter Street Streetscape
4. Public Green / Open Space
5. Winter Street District
6. Opportunities for Public Art



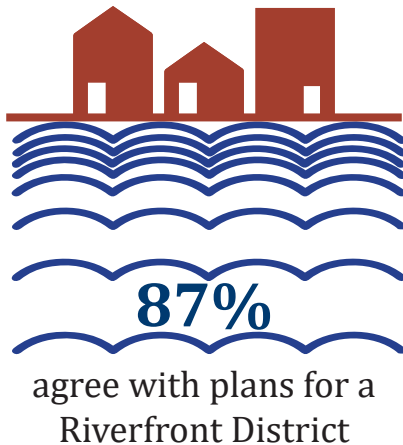
Some of the bike racks in Columbus include a roof and maps for easier wayfinding, which increases connectivity throughout the city.



28% recommended
other projects, such as
bike trails

COMMUNITY SURVEY MEMORANDUM

DOWNTOWN DELAWARE ACTION PLAN



Chagrin Falls is a small town located along the Chagrin River near Cleveland and has embraced its riverfront as the centerpiece of downtown.



40% disagree
with projects that
identify public art

Although public art was not a priority for the people of Delaware, even things such as signs and billboards can become something for everyone to enjoy.

